



# CAPITAL

Collection



## Stratford & Highgate

*Recycled light-filtering and blackout fabrics  
with a wool-like texture*

3000mm

# Stratford & Highgate

A pair of light-filtering and blackout fabrics with a coordinated range of on trend colours. Stratford and Highgate are characterised by a delicate *wool-like texture* that creates a feeling of warmth and intimacy.

Both fabrics are woven with yarns produced with recycled PET.



Matching light-filtering and blackout fabrics



44% recycled PET

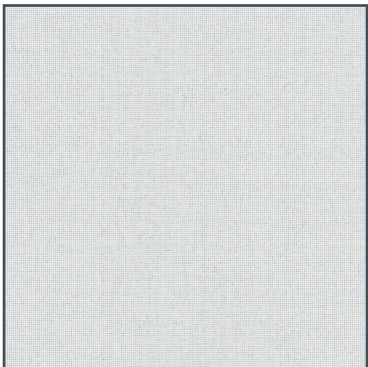


On trend colours and textures

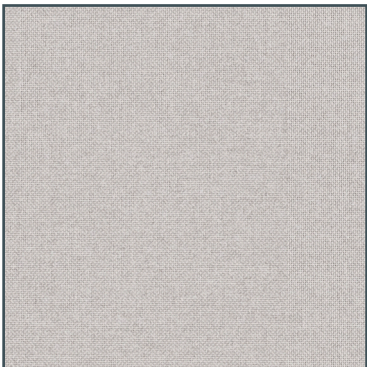
	Stratford	Highgate
Product	Roller	Roller
Composition	56% PES, 44% Recycled PES	56% PES, 44% Recycled PES
Roller - roll width	3000mm	3000mm
Roller - roll length	ca. 30m	ca. 30m
Weight	290g/m <sup>2</sup>	413g/m <sup>2</sup>
Thickness	0.58mm	0.62mm
FR Classification	Not FR	Not FR
Colour Fastness (ISO 105 - B02)	Grade 5	Grade 5
Cleaning	Damp cloth	Damp cloth
Recommended cut method	Cold Cut, Ultrasonic	Cold Cut, Ultrasonic
Oeko-Tex Standard 100	Yes	Yes
Suitable for moist conditions	No	No

# Stratford

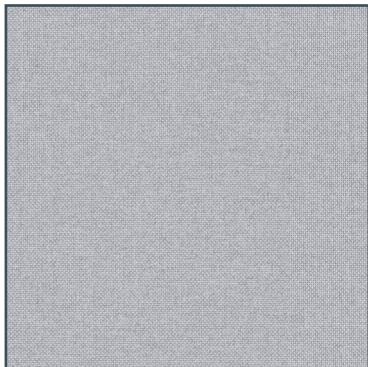
A textured, light-filtering fabric made with recycled plastic



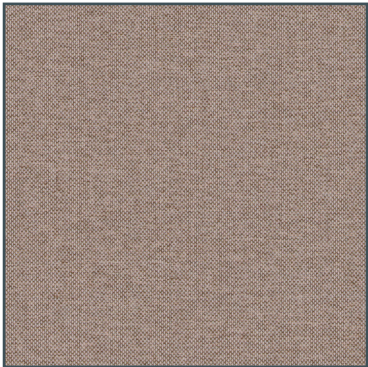
White 3000mm



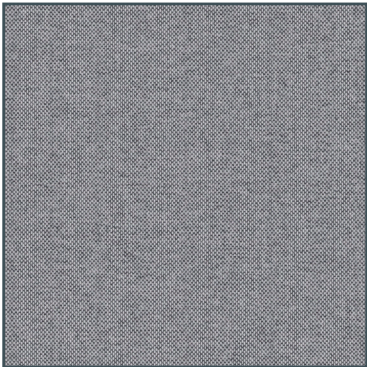
Sand 3000mm



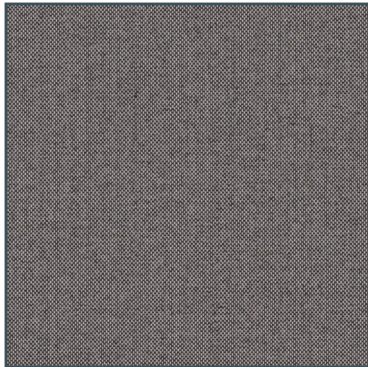
Mist 3000mm



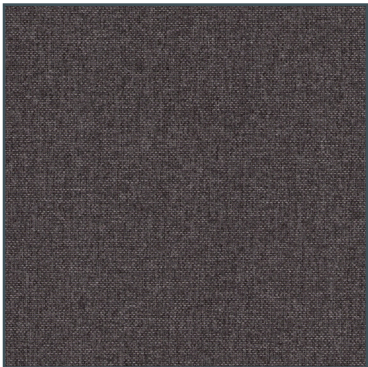
Twill 3000mm



Frost 3000mm



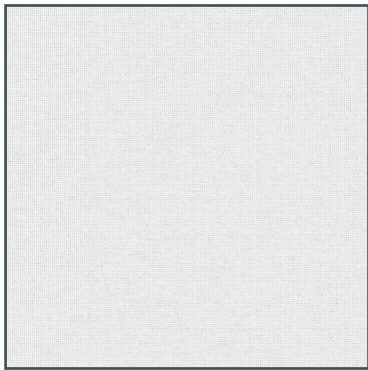
Bark 3000mm



Castle Rock 3000mm

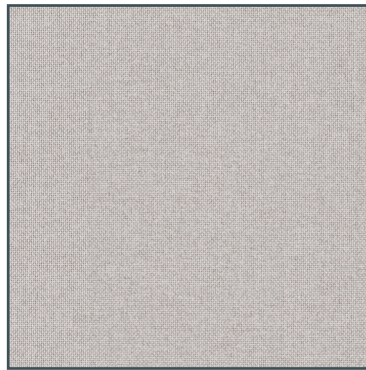
# Highgate

The blackout counterpart to Stratford



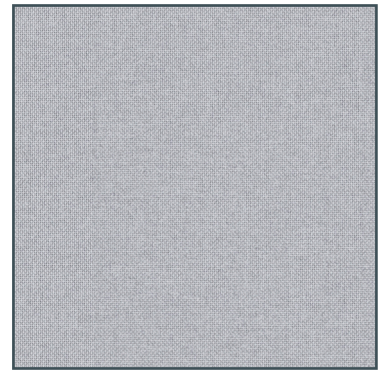
White

3000mm



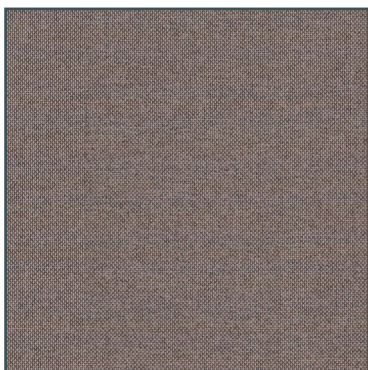
Sand

3000mm



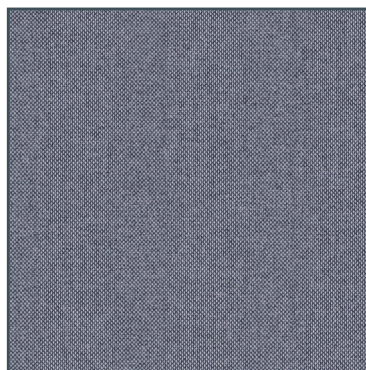
Mist

3000mm



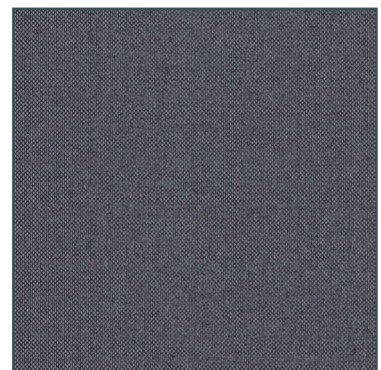
Twill

3000mm



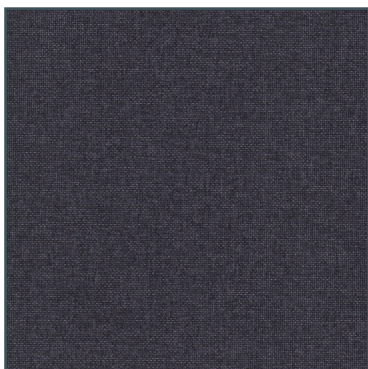
Frost

3000mm



Bark

3000mm



Castle Rock

3000mm